



Alarm International Systems  
Nice to be your partner

# HDTVI780



## 8MP HD Analog IR Dome Camera



### HDTVI780

8MP HD Analog IR Dome Camera

- 8MP@15fps/5MP@20fps/4MP@30fps high resolution, true color
- AHD / TVI / CVI standard and lossless video output
- Up to 1700 TVL resolution
- CMOS progressive scan, perfectly capture the moving object
- Support OSD menu
- High speed, long distance and real time transmission
- Auto color to B / W at low illumination
- Support ICR switch, true day / night
- Support noise reduction function
- 20 ~30m IR night view distance
- IP66 ingress protection
- Support COC
- Support 960H CVBS output

Sensor	1700TVL	Min. illumination	BLC
Day&Night	Auto WB	Sync	IP66





## HDTV1780

### 8MP HD Analog IR Dome Camera

- 8MP@15fps/5MP@20fps/4MP@30fps high resolution, true color
- AHD / TVI / CVI standard and lossless video output
- Up to 1700 TVL resolution
- CMOS progressive scan, perfectly capture the moving object
- Support OSD menu
- High speed, long distance and real time transmission
- Auto color to B / W at low illumination
- Support ICR switch, true day / night
- Support noise reduction function
- 20 ~30m IR night view distance
- IP66 ingress protection
- Support COC
- Support 960H CVBS output



Model	HDTV1780
<b>Specifications</b>	
<b>Camera</b>	
Image Sensor	1 / 2.5 "CMOS
Resolution	8MP
Image Size	3840x2160
Video Output	AHD / TVI / CVI / CVBS
Image System	PAL / NTSC
Electronic Shutter	Auto
IR Distance	20 ~ 30 m
Frame Rate	15fps
Min. Illumination	Color : 0.01 lux@F1.2, AGC ON; B/W : 0 lux with IR
Lens	2.8-12 mm
Lens Mount	D14
S / N Ratio	≥52dB ( AGC OFF )
Ingress Protection	IP 66
<b>Functions</b>	
Function Control	OSD ( COC Control )
Day & Night	ICR
Digital WDR	No
3D NR	Yes
AGC	No
Auto White Balance	Yes
BLC	Yes
Defog	No
LSC	No
Saturation	Yes
Sharpness	Yes
Contrast	Yes
Smart IR	No
Image Setting	Yes
Defect Correction	Auto
Language	11 languages
Angle Adjustment	Pan: 0°~360°; Tilt: 0°~90°; Rotation: 0°~360°
<b>Others</b>	
Power Supply	DC12V ( ± 15% )
Power Consumption	IR OFF : < 2W; IR ON : < 5W
Working Environment	- 30 °C ~ 50 °C, 10 % ~ 90 % ( relative humidity )
Dimensions ( mm )	Φ 130.3 x 110
Weight ( net )	Approx. 0.66KG

## AVAILABLE ACCESSORIES

ACTVT913



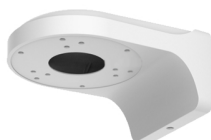
Junction Box

ACTVT915



Junction Box

ACTVT923



Wall out

## DIMENSIONS

