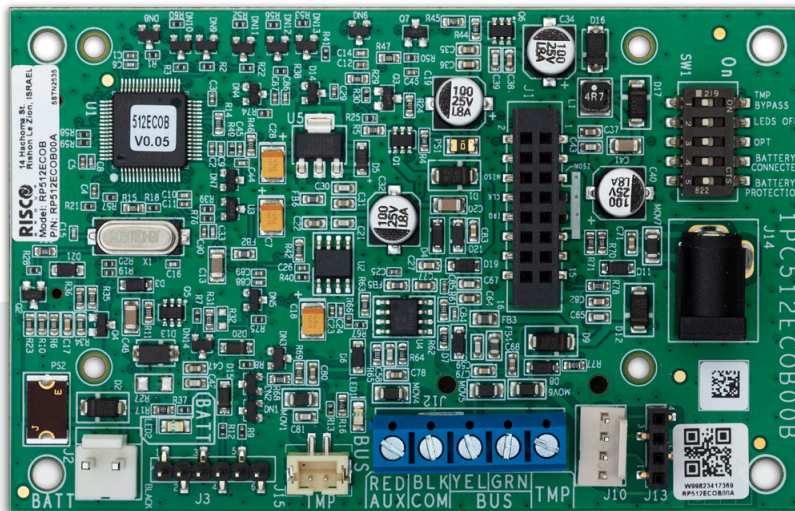


Cellular on Bus Module (COB)

Model: RP512ECOB



The Cellular on Bus Module (COB) enables the installation of a cellular communication module outside the Control Panel along the system bus, allowing flexible positioning of the cellular module for optimal cellular signal level. The COB is an interface board, on which either 2G or 3G modules can be plugged.



The COB supports:

- 2G/3G plug-in modules
- Cloud connectivity via cellular
- SMS reporting
- Reporting to Monitoring Stations (IP Receiver)
- Follow Me reporting via email
- Multi-socket communication
- Panel configuration via CS

For installations up to 30m from the panel, the COB can be mounted in the B5 Box (RP128B5) or inside a LightSYS Polycarbonate Box (RP432BP).

For distances greater than 30m from the panel, separate power supply is needed. The LightSYS Polycarbonate Box (RP432BP) can be used with respective power supply and backup battery.

COB is compatible with LightSYS as of version 5.92 and ProSYS Plus as of version 1.2.1.17.

Specifications

- Current Consumption: 13.8v +/-10%, 48mA typical/120mA max.
- Main Panel Connection: 4-wire BUS, up to 300m from main panel
- Operating temperature: -10°C to 55°C (14°F to 131°F)
- Storage temperature: -20°C to 60°C (-4°F to 140°F)

Ordering information

PN	Description
RP512ECOB	Cellular on Bus (COB) Module
RP128B5	B5 Plastic Accessory Box
RP432BP	LightSYS Polycarbonate Box
RP432TMPCOB	COB Tamper for LightSYS Housing