

## **DS-3E0310HP-E(C)** **8 Port Fast Ethernet Unmanaged PoE Switch**



DS-3E0310HP-E(C) switches are layer 2 Hi-PoE switches, providing advanced PoE power supply technology and Gigabit network design on the basis of high-performance access to ensure stable data upload. The switches support Hi-PoE, long range, port isolation, and PoE watchdog functions.

- 8 × 10/100 Mbps PoE port, 2 × Gigabit RJ45 port
- IEEE 802.3bt standard Hi-PoE, Max. 90 W for one port.
- Up to 300 m long range PoE transmission.
- Port isolation to improve network security.
- 6 kV surge protection to improve reliability in harsh environment.
- PoE watchdog to auto-detect and restart cameras that do not respond.

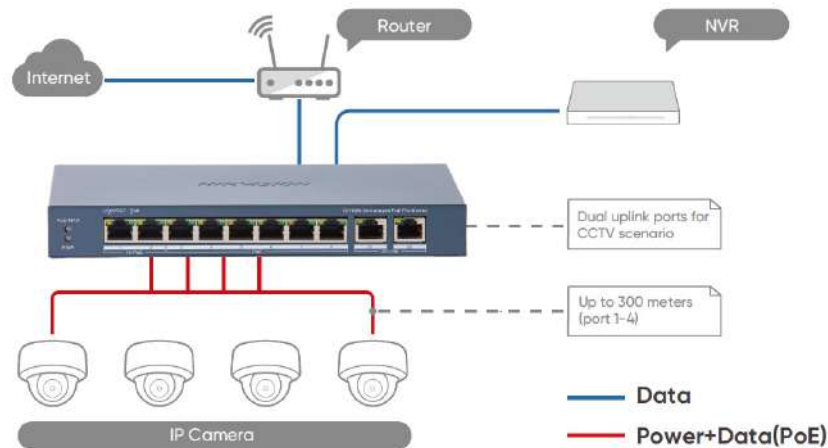
## ▪ Specification

General	
Shell	Metal material, fan-free design
Net Weight	0.56 kg (1.23 lb)
Gross Weight	1.27 kg (2.79 lb)
Dimensions (W × H × D)	217.6 mm × 27.6 mm × 108.5 mm (8.57" × 1.09" × 4.27")
Operating Temperature	0 °C to 40 °C (32 °F to 104 °F)
Storage Temperature	−40 °C to 85 °C (−40 °F to 185 °F)
Operating Humidity	5% to 95% (no condensation)
Relative Humidity	5% to 95% (no condensation)
Power Supply	54 V DC, 2.22 A
Max. Power Consumption	120 W
Power Consumption in Idle	< 10 W
Installation Mode	Desk-Mounted
Surge Protection	6 kV
Network Parameters	
Ports	8 × 10/100 Mbps PoE port, 2 × Gigabit RJ45 port
MAC Address Table	4 K
Switching Capacity	5.6 Gbps
Packet Forwarding Rate	4.17 Mpps
Internal Cache	2 Mbits
PoE Power Supply	
PoE Standard	Ports 1 and 2: IEEE 802.3af, IEEE 802.3at, IEEE 802.3bt Ports 3 to 8: IEEE 802.3af, IEEE 802.3at
PoE Power Pin	Ports 1 to 2: 8-pin power: 1/2(-), 3/6(+), 4/5(+), 7/8(-) Ports 3 to 8: End-span: 1/2(-), 3/6(+)
PoE Port	Hi-PoE: Ports 1 to 2 PoE: Ports 3 to 8
Max. Port Power	Ports 1 and 2 : 90 W Ports 3 to 8: 30 W
PoE Power Budget	110 W
Dialing Function	
Long Range	Ports 1 to 8: up to 300 m. Long range performance may vary depend on camera model or cable condition.
Port Isolation	Ports 1 to 8: port isolation mode to improve network security.
PoE Watchdog	Ports 1 to 8: auto detect and restart the cameras that do not respond.
Approval	
EMC	CE-EMC (EN 55032: 2015+A11: 2020, EN IEC 61000-3-2: 2019, EN 61000-3-3: 2013+A1: 2019, EN 50130-4: 2011+A1: 2014, EN 55035: 2017+A11: 2020), IC (ICES-003: Issue 7:2020), RCM (AS/NZS CISPR 32: 2015)
Safety	UL (UL 62368-1); CB (IEC 62368-1:2014); CE-LVD (EN 62368-1:2014+A11:2029)
Chemistry	CE-RoHS (2011/65/EU); WEEE (2012/19/EU); Reach (Regulation (EC) No 1907/2018)

## ▪ Available Model

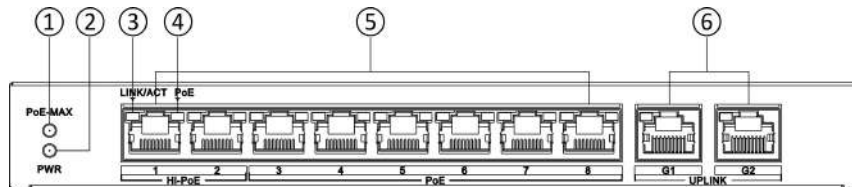
DS-3E0310HP-E(C)

## Typical Application

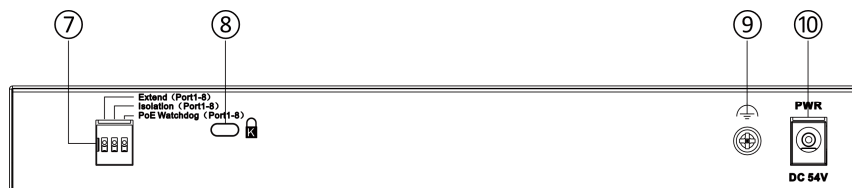


## Physical Interface

Front Panel



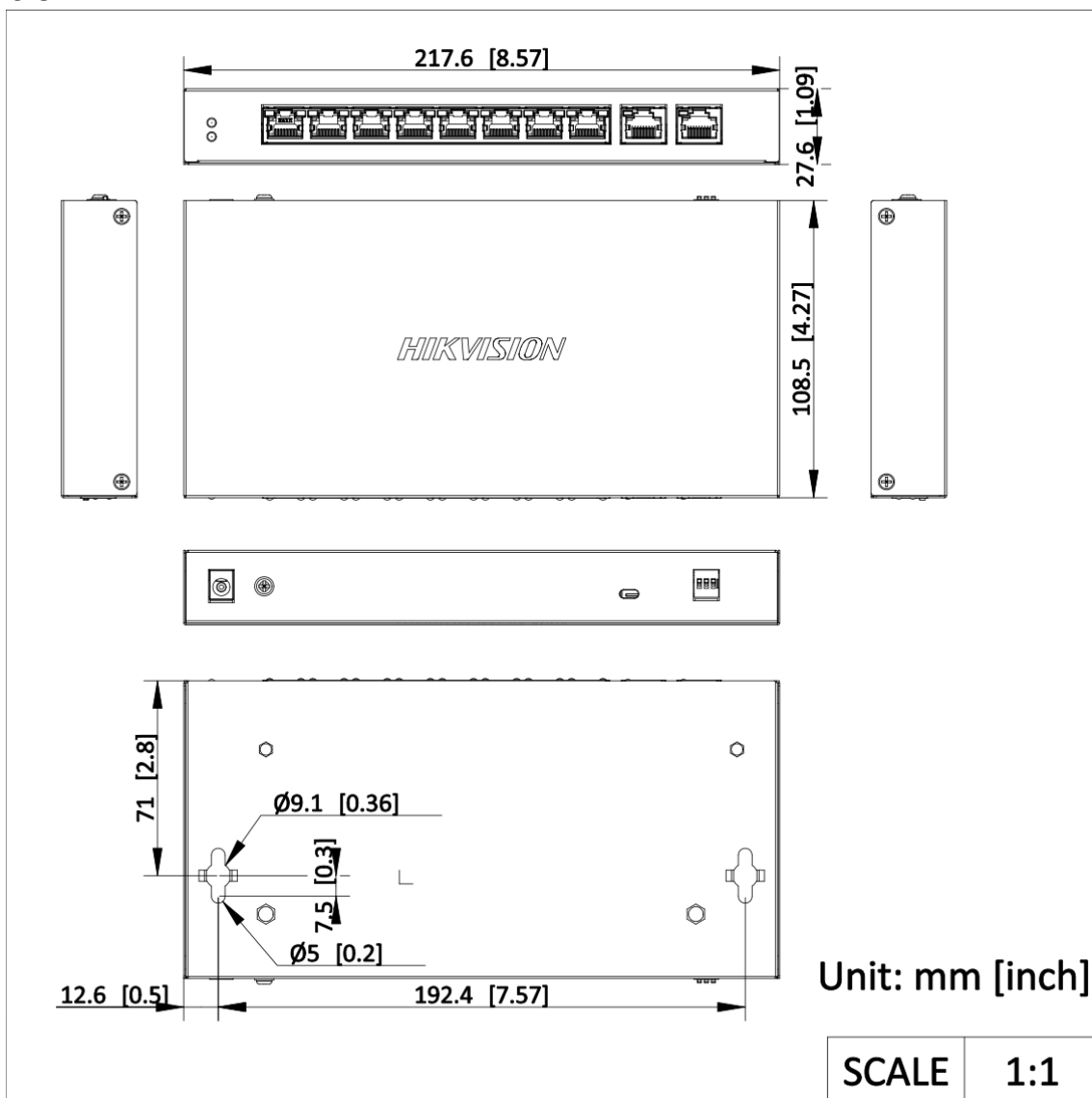
Rear Panel



No.	Indicator/Port	Description
①	PoE-MAX Indicator	<ul style="list-style-type: none"> <li>● Solid on: The output power of the switch is about to reach or has reached the upper limit. The power supply may be abnormal if more devices are connected.</li> <li>● Unlit: The switch does not supply power to a powered device (PD), or supplies power to a PD normally and its output power does not reach the upper limit. The PoE-MAX indicator will be unlit in five seconds after the output power of the switch returns to normal.</li> </ul>
②	PWR Indicator	<ul style="list-style-type: none"> <li>● Solid on: The switch is powered on normally.</li> <li>● Unlit: No power supply connected or power supply is abnormal.</li> </ul>
③	LINK/ACT Indicator	<ul style="list-style-type: none"> <li>● Solid on: The port is connected.</li> <li>● Flashing: The port is transmitting data.</li> <li>● Unlit: The port is disconnected or connection is abnormal.</li> </ul>
④	PoE Indicator	<ul style="list-style-type: none"> <li>● Solid on: The switch provides power supply to a PD normally.</li> <li>● Unlit: The switch is disconnected to a PD, or provides power supply to a PD abnormally.</li> </ul>
⑤	100 Mbps PoE RJ45 Port	Used for connection to a PD via a network cable. Ports 1 and 2 of the switch are Hi-PoE RJ45 ports, which can be connected to high-power devices.
⑥	Gigabit RJ45 Port	Used for connection to another device via a network cable.
⑦	DIP Switch	Toggle on or off the DIP Switch to enable or disable the corresponding mode. Three modes are supported:

		<ul style="list-style-type: none"> <li>● Extend (ports 1 to 8): With this mode enabled, the corresponding ports of the switch support network transmission of up to 300 meters.</li> <li>● Isolation (ports 1 to 8): With this mode enabled, data transmission of the corresponding ports is isolated from each other to improve network security.</li> <li>● PoE Watchdog (ports 1 to 8): With this mode enabled, cameras that do not respond will be automatically detected and restarted.</li> </ul>
⑧	Security Hole	Use the steel cable lock (optional) to lock the switch.
⑨	Grounding Terminal	Used for connection to a grounding cable to protect the switch from lightning.
⑩	Power Supply	Use the attached power adapter and power cord to connect the switch to a power socket.

## ▪ Dimension



# See Far, Go Further



[www.hikvision.com](http://www.hikvision.com)  
[support@hikvision.com](mailto:support@hikvision.com)

